

POLYSACCHARIDES

TRITERPENES

β-GLUCAN

CORDYCEPIN

ADENOSINE

JUNCAO CULTIVATION TECHNOLOGY

- 1 We are the only one to use JUNCAO technology to cultivate Reishi in the world. Patent No.: ZL01115637.6.
- 2 Two National organizations provide the highest support for technology and innovation.
- 3 Eco-friendly. Select 42 kinds of herbs as the cultivating medium by instead of cutting trees like common Reishi.
- 4 Stronger efficacy. JUNCAO Reishi contains more active ingredients than common Reishi.



Prize of the State of Geneva in the 20th International Exhibition of Inventions of Geneva(1992.4)



Prize of the Ministry of Internal Affairs of France in the 85th Paris International Exhibition(1994.5)



Professor Zhan Xi Lin
JUNCAO Technology Investor and Leader,
China's chief Scientist,Grant Recipient.

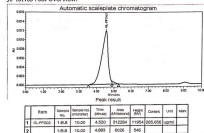


Meet the Current Chairman of P.R.C., Jin Ping Xi
(former governor of Fujian Province)

Polysaccharide Peptide Content

Item Name	Batch No.	Sample Quantity (mg)	Sample Concentration (mg/ml)	Dilution Ratio	Content	Average
Juncao Reishi Extract	JC-TD1708	30.12	265.66	50	44.10	44.28
		29.74	264.47	50	44.46	

JC-TD1708 Test Overview:



HPLC test overview of polysaccharide content of Juncao-Ganoderma lucidum

We use Ganoderma Polysaccharide Peptide as the standard to test polysaccharides content by HPLC method. It is the most accurate test method in the world. Our ganoderma polysaccharides extract is the leading one with an average of more than 44%.

Contact Information

- Zone A, Floor 18, Shijiejinlong Plaza, No. 159 Wusi Road, Gulou District, Fuzhou, Fujian, China.
- WLSK-CN001@JUNCAO.CN
- Tel:86-591-87887676
- www.wulingbiotech.com

ABOUT WULING

Wuling Biotech is professional manufacture doing Mushrooms Extract and Healthy Coffee & Tea in last 16 years with ORGANIC certificate. We own 78 acres planting farm and GMP certified factory . We are an Eco-friendly pharmaceutical health care enterprise! Our mission is to bring the best Chinese traditional products to keep people healthy, while protecting the environment!

PLANTING FARM



FACILITY SITE



OEM SERVICE



WULING 吾灵生物

ORGANIC MEDICINAL MUSHROOM SUPPLIER



● JUNCAO Reishi Fruit Body/Slices/Powder

- Fruit Body & Slices: DIA.Length:6-12cm
- Reishi Powder: 100-300 Mesh
- 2-10% Polysaccharides
- Boiled (with the water) For 5-10 Minutes, Strain And Enjoy.
- Add with Honey/Juice Etc. to Overcome The Bitter Flavor.



HOT

● JUNCAO Reishi (Shell-broken) Spore Powder

- Seed of Reishi, Dispersed from Reishi Fruit Body once Reaching Maturity.
- Breakage Rate of Shell-broken Spore Powder >99%
- 80-100 Mesh
- Polysaccharides 2-8%, Triterpenes 1-4%



HOT

● Reishi Polysaccharides/Triterpenes Extract

- Extracted By Hot Water/Alcohol from JUNCAO Reishi Fruit Body
- Organic 100% Pure, Without Any Additives
- 80-100 Mesh, USDA/FDA
- Polysaccharides 10/20/30%, Triterpenes 3/4/6%, or Customization
- β -Glucan 20/30%/50%
- Triterpenes 4%/6%/10%
- Stirring with Hot Water or Add into Coffee/Tea/Juice/Food



HOT

● JUNCAO Reishi Spore Oil

- Super Concentrated from JUNCAO Reishi Shell-Broken Spore powder
- By Using Supercritical CO2 Extraction Technology
- 100% pure, Without any Additives
- JUNCAO Reishi Spore oil Contains 15% More unsaturated Fatty Acid Than Common Spore oil
- Triterpenes \geq 26.5% or customized with order



HOT

● Organic 7 Mushroom Extract Powder

- Combine with 7 Organic Medicinal Mushroom Extract Powder
- Contains high percentage of Polysaccharides, β -Glucan, Triterpenes Cordycepin, Adenosine
- Independent Package, 60g, 100g, 240g or customized as demand
- Running Stock and Immediately Shipment for Small Test Order



● JUNCAO Reishi Spore Oil Softgel

- Organic 100% Pure, Without Any Additives
- 500mg/Capsule, 30 or 60 Softgels/Bottle
- Super Concentrated from JUNCAO Reishi Shell-broken Spore Powder
- By Using Supercritical CO2 Extraction Technology
- 15% More Unsaturated Fatty Acid than Common Spore Oil
- Triterpenes \geq 26.5%



HOT

● JUNCAO Reishi Extract Capsule

- Polysaccharides/Triterpenes/Essential Powder Capsule
- Plant Capsules, 2-3 Capsules Daily.
- 80-100 Mesh, 300mg/Capsule, 30 or 60 Capsules/Bottle
- Extract by Hot Water/Ethanol from Reishi Fruit Body
- Polysaccharides 30%, Triterpenes 4%/6%/10%
- Private Label Available, OEM Available



HOT

● JUNCAO Reishi (Shell-broken) Spore Powder Capsule

- Seed of Reishi, Dispersed from Reishi Fruit Body once Reaching Maturity.
- Breakage Rate of Shell-broken Spore Powder \geq 99%
- 80-100 Mesh, Plant Capsules
- 150mg/Capsule (Reishi Spore Powder), 30 or 56 Capsules/Bottle
- 300mg/Capsule (Reishi Shell-broken Spore Powder), 30 or 60 Capsules/Bottle
- Polysaccharides 8%, Triterpenes 4%



HOT

● Reishi Coffee/Weight Control Coffee/Man Power

- **New Product: Weight Control Coffee, Control Your Weight With Health Man Power Coffee, Increases libido and treats erectile dysfunction**
- Arabica Coffee Powder with 100% Certified Organic JUNCAO Reishi Extract
- 5 Different Excellent Flavor For Your Choice
- Black Coffee/Latte/Cappuccino/Mocha/Hot Chocolate Coffee
- Running Stock and Immediately Shipment for Small Test Order
- Efficient R & D Capability for OEM



HOT

● JUNCAO Reishi Tea

- Reishi Black Tea & Reishi Green Tea
- EU Standard Qualified Tea
- Add with 100% Certified Organic JUNCAO Reishi Extract
- 20 Sachets Per Box
- Running Stock and Immediately Shipment for Small Test Order



HOT

● Coriolus Versicolor (Turkey Tail) Mushroom Powder / Extract

- Extracted from Mushroom Fruit Body
- Polysaccharide 20%/30%/50% Etc
- β -Glucan 20/30%/50%
- Ingredients: Polysaccharide, Protein, VE, etc
- Raw material/Capsules/Granule/Tea bag/Coffee/Supplement
- Dosage: 3-5 g/day (Powder), 1-2 g/day (Extract)



USDA ORGANIC

● Cordyceps Sinensis (Cordyceps Militaris) Powder / Extract

- Ingredient: Polysaccharides, Adenosine, Cordycepin, Proteins
- Polysaccharide 10%/20%/30%/50% Etc
- β -Glucan 20/30%/50%
- Cordycepin 0.1%/0.5%/1%
- Raw material/Capsules/Granule/Tea bag/Coffee/Supplement
- Dosage: 1-3 g/day (Powder), 1-2 g/day (Extract)



USDA ORGANIC

● LION'S Mane (Hericium Erinaceus) Mushroom Powder / Extract

- Extracted from Mushroom Fruit Body
- Polysaccharide 10%/20%/30%/50% Etc
- β -Glucan 20/30%/50%
- Hot water & Alcohol Extraction
- Raw material/Capsules/Granule/Tea bag/Coffee/Supplement
- Dosage: 3-5 g/day (Powder), 1-2 g/day (Extract)



USDA ORGANIC

● Chaga (Inonotus Obliquus) Mushroom Powder / Extract

- Extracted from Mushroom Fruit Body
- Polysaccharide 10%/20%/30%/50% Etc
- β -Glucan 20/30%
- Hot water & Alcohol Extraction
- Raw material/Capsules/Granule/Tea bag /Coffee/Supplement
- Dosage: 3-5 g/day (Powder), 1-2 g/day (Extract)



USDA ORGANIC

● Agaricus Blazei Mushroom Powder / Extract

- Extracted from Mushroom Fruit Body
- Ingredients: Polysaccharide, Adenosine
- Polysaccharide 10%/20%/30%/50% Etc
- β -Glucan 20/30%/50%
- Raw material/Capsules/Granule/Tea bag/Coffee/Supplement
- Dosage: 3-5 g/day (Powder), 1-2 g/day (Extract)



USDA ORGANIC

● Maitake (Grifola Frondosa) Mushroom Powder / Extract

- Extracted from Mushroom Fruit Body
- Polysaccharide 10%/20%/30%/50% Etc
- β -Glucan 20/30%/40%
- Ingredients: Polysaccharide, Protein, VE, etc.
- Raw material/Capsules/Granule/Tea bag /Coffee/Supplement
- Dosage: 1-3 g/day (Powder), 1-2 g/day (Extract)



USDA ORGANIC

● Oyster (Pleurotus Ostreatus) Mushroom Powder / Extract

- Extracted from Mushroom Fruit Body
- Polysaccharide 10%/20%/30%/50% Etc
- β -Glucan 20/30%/40%
- Specification: 80-100 mesh
- Raw material/Capsules/Granule/Tea bag /Coffee/Supplement
- Dosage: 3-5 g/day (Powder), 1-2 g/day (Extract)



USDA ORGANIC

● Shiitake (Lentinula Edodes) Mushroom Powder / Extract

- Raw material/Capsules/Granule/Tea bag/Coffee/Supplement
- Polysaccharide 10%/20%/30%/50%, Adenosine 0.2%/0.5%/1% Etc
- β -Glucan 20/30%/50%
- Ingredients: Polysaccharide, Adenosine
- Extracted from Mushroom Fruit Body
- Dosage: 3-5 g/day (Powder), 1-2 g/day (Extract)



USDA ORGANIC

● Tremella Powder / Extract

- Extracted from Mushroom Fruit Body
- Polysaccharide 10%/20%/30%/50% Etc
- β -Glucan 20/30%/50%
- Specification: 80-100 mesh
- Raw material/Capsules/Granule/Tea bag /Coffee/Supplement
- Dosage: 3-5 g/day (Powder), 1-2 g/day (Extract)



USDA ORGANIC

● 8 Organic Mushroom Powder/Extract Powder

- Contains high percentage of Polysaccharides, β -Glucan, Triterpenes Cordycepin, Adenosine
- Independent Package, 50g, 100g 226g for powder;
- 100g/226g/450g for extract or customized as demand
- Running Stock and Immediately Shipment for Small Test Order



USDA ORGANIC